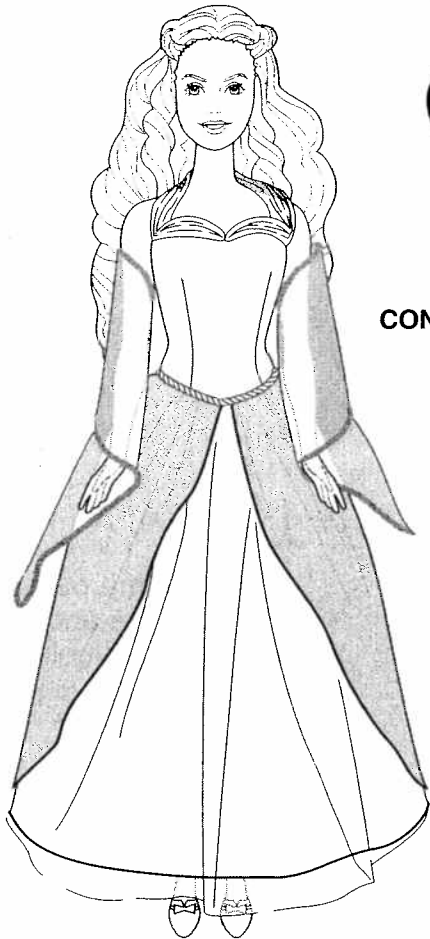


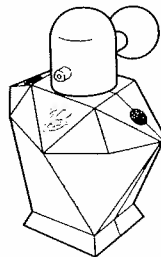
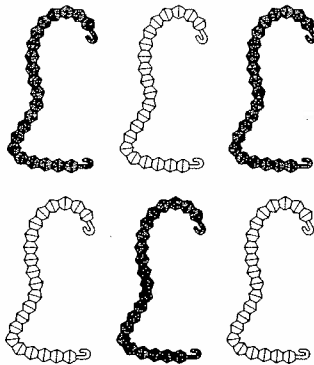
Barbie®  
Doll

# Magic Jewel™

## INSTRUCTIONS



### CONTENTS



Colors and decorations may vary from those shown.

Please remove everything from the package and  
compare to the contents shown here.  
If any items are missing, please call 1-800-524-TOYS.



53987-0920-G1

Keep these instructions for future reference as they contain important information.

©2001 Mattel, Inc. El Segundo, CA 90245 U.S.A. All Rights Reserved.

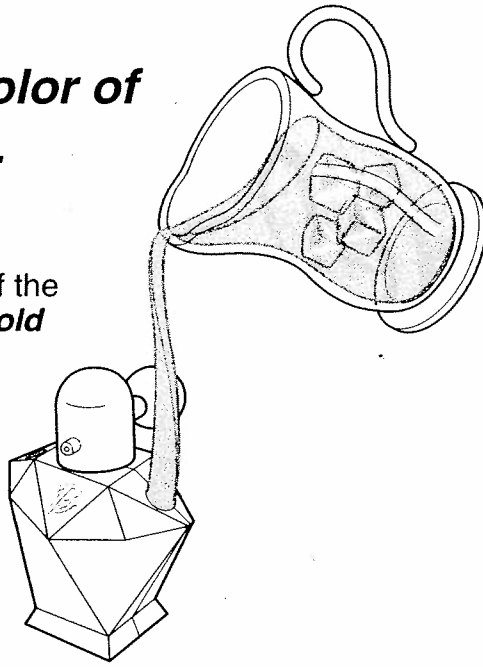
# Decorate your doll's dress with

## Change the color of your "jewels".

**1.**

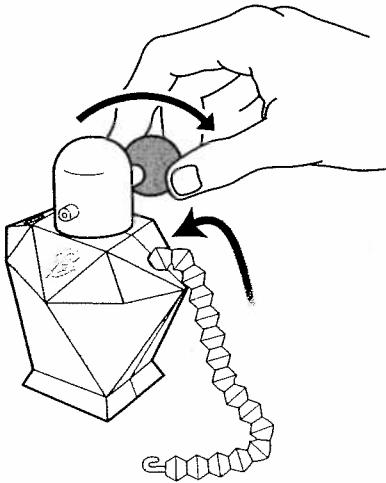
Fill either hole of the bottle with *icy cold* water.

Replace the icy cold water in the bottle frequently to make sure the beads' color change function works properly.



**2.**

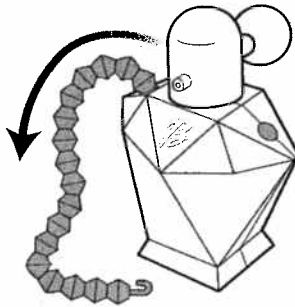
Put bead strand into either hole and turn the bottle knob to pull the strand through the water.



**3.**

"Jewels" come out of the other side and have changed color!

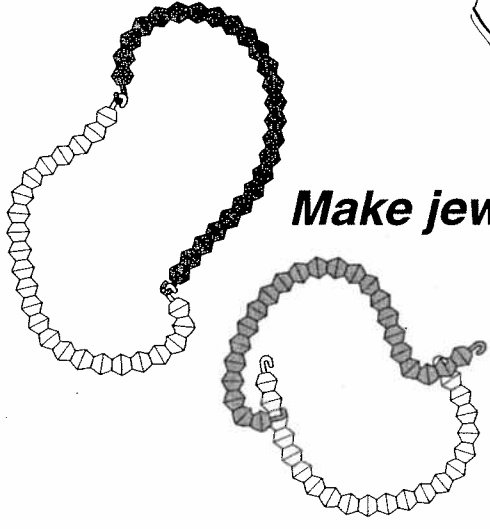
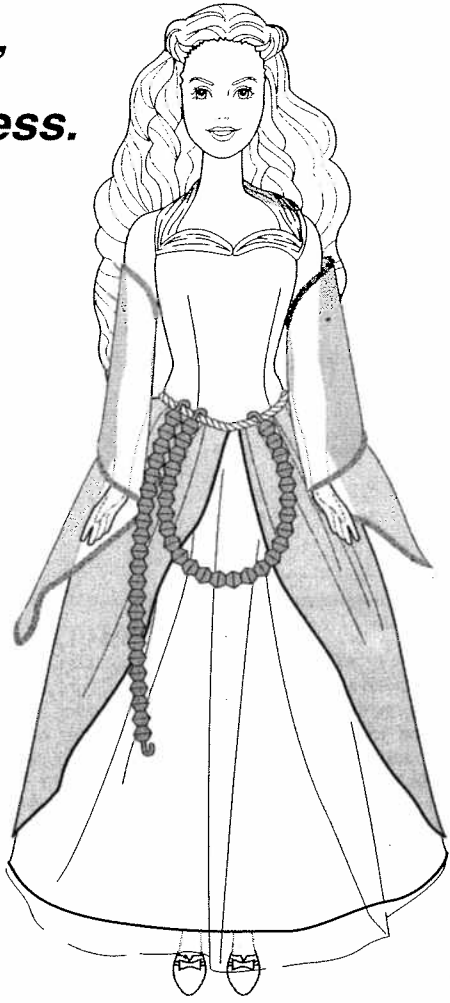
Return the "jewels" to their original color with the warmth of your hands.



# *h beautiful, magic “jewels.”*


***Attach the “jewels”  
onto your doll’s dress.***

Use the strand’s  
hook to loop onto  
your doll’s dress,  
as shown.



***Make jewelry for yourself!***

Link each strand to  
another by either  
connecting the hooks  
together, or a hook to a  
strand.

 **WARNING:** Never allow young children to play in or around water without adult supervision.

After each use, drain, rinse, clean and dry all items thoroughly before storing.

Water toys sometimes get messy. Protect play surfaces before use.

Overfilling of reservoir may cause leakage.

Color change will last longer if you do not expose this toy to intense heat or direct sunlight for prolonged periods of time.

---

## TWO YEAR LIMITED WARRANTY

Mattel, Inc. warrants to the original consumer purchaser that this product will be free of defects in material or workmanship for two years (unless specified in alternate warranties) from the date of purchase. If defective, return the product along with proof of the date of purchase, postage prepaid, to Consumer Relations, 636 Girard Avenue, East Aurora, New York 14052 for replacement or refund at our option. This warranty does not cover damage resulting from unauthorized modification, accident, misuse or abuse. In no event shall we be responsible for incidental, consequential, or contingent damages (except in those states that do not allow this exclusion or limitation). **VALID ONLY IN U.S.A.** This warranty gives you specific legal rights and you may also have other rights which vary from state to state. Some states do not allow the exclusion of incidental or consequential damages, so the above exclusions or limitations may not apply to you.

Send only the product to the address above. Send all correspondence to Consumer Relations, Mattel, Inc., 333 Continental Blvd., El Segundo, California 90245-5012 U.S.A. Or you may phone us toll-free at 1-800-524-TOYS, Monday – Friday, 8:00 a.m. – 6:00 p.m. EST. Outside U.S.A., see telephone directory for Mattel listing.

**CONSUMER INFORMATION**


 **MATTY MATTEL™ toys**

**YOU CAN TELL IT'S MATTEL!™** CALL us toll-free or write with any comments or questions about our products or service. Monday-Friday 8:00 a.m.-6:00 p.m. Eastern Time. Outside U.S.A., see telephone directory for Mattel listing.

Consumer Relations, Mattel, Inc.  
333 Continental Blvd.  
El Segundo, CA 90245 USA

**1(800) 524-TOYS**

**WE ARE DEDICATED TO QUALITY PRODUCTS.**

 **WARNING:**  
**CHOKING HAZARD – Small parts.**  
Not for children under 3 years.